

Besprechung SWT1/A

WS 2023/24

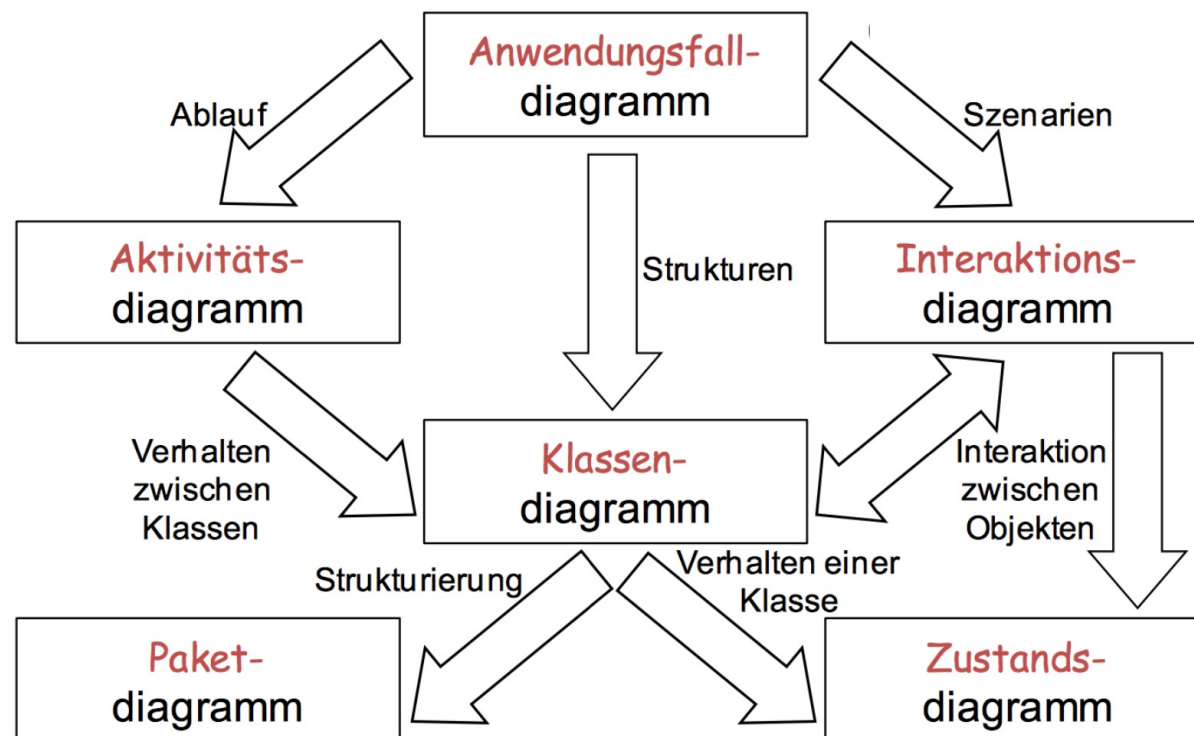
Themen

- Organisation Modellierungsworkshop
- Was wird erwartet / Abgabe
- Fragen zu den Themen:
 - Use-Case-Diagramme
 - Statisches Modell (UML-Klassendiagramm)

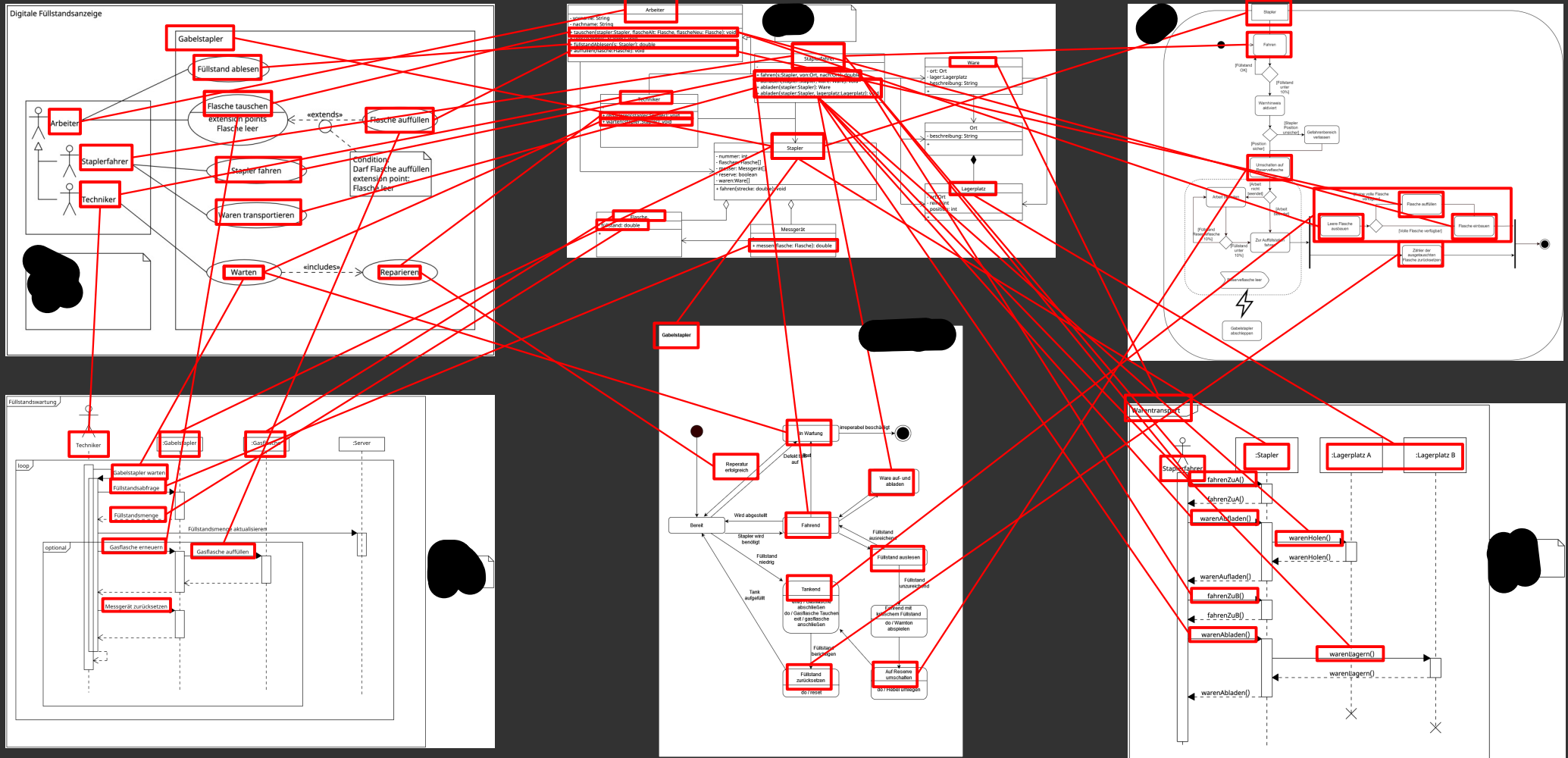
Was wird erwartet / Abgabe

- OOA-Modell ihres Projekt
 - Arbeitsaufträge sind herausgegeben! (siehe ILIAS)
 - Am Ende soll ein großes „Whiteboard“ abgegeben und präsentiert werden, auf dem alle Diagramme und deren Abhängigkeiten modelliert sind.
- Diagramme ALLE auf das Concept-Board hochladen!
 - Wir schauen uns regelmäßig die Zwischenstände an

Motivation Diagramme und Abhängigkeiten

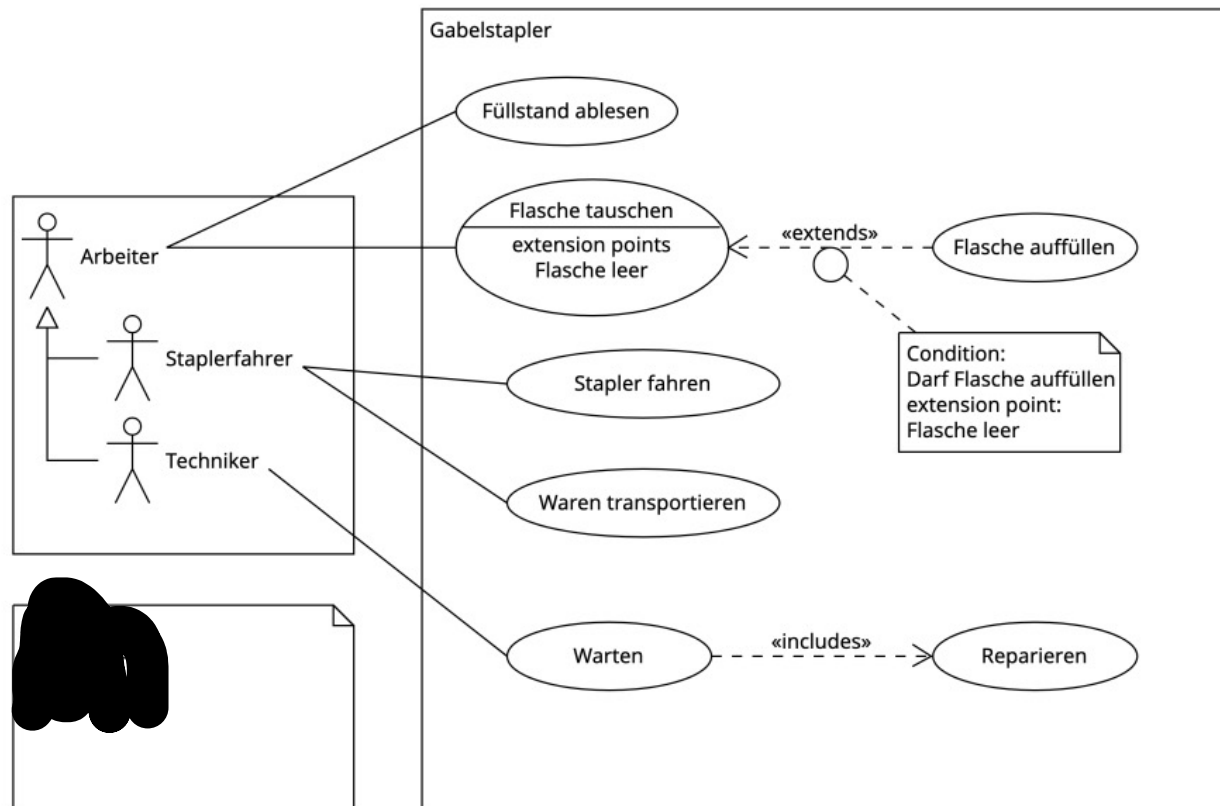


Modellierung

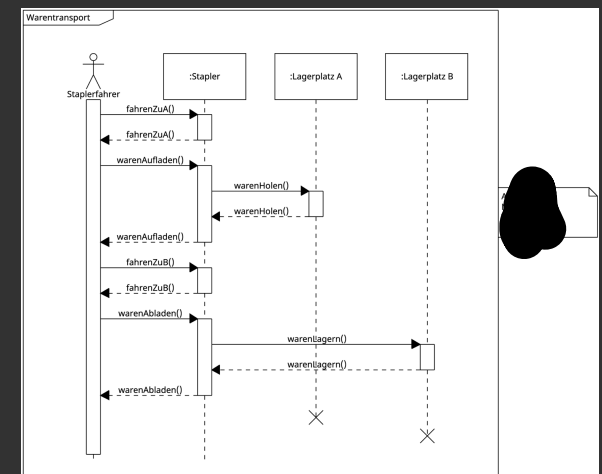
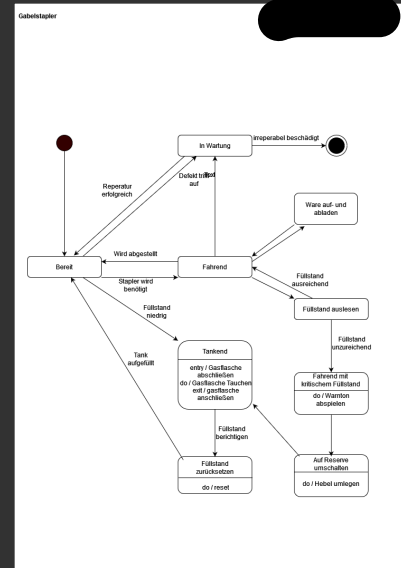
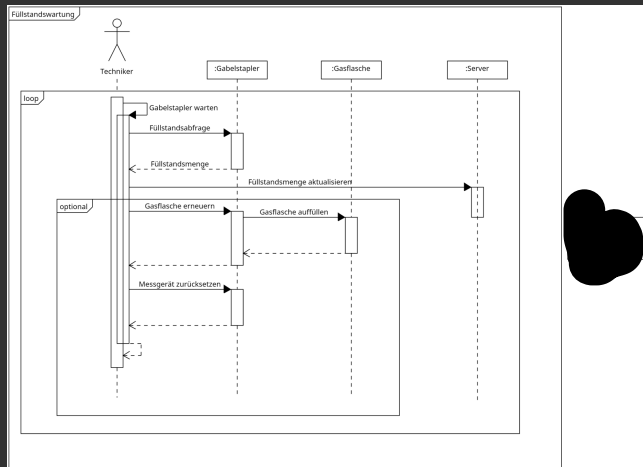
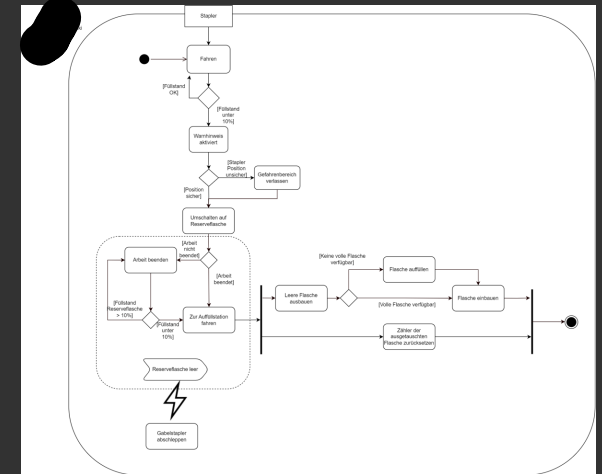
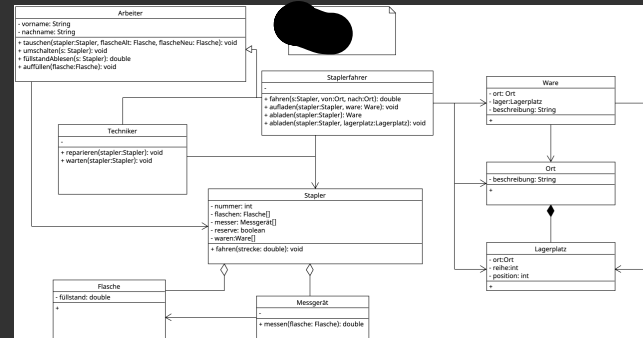
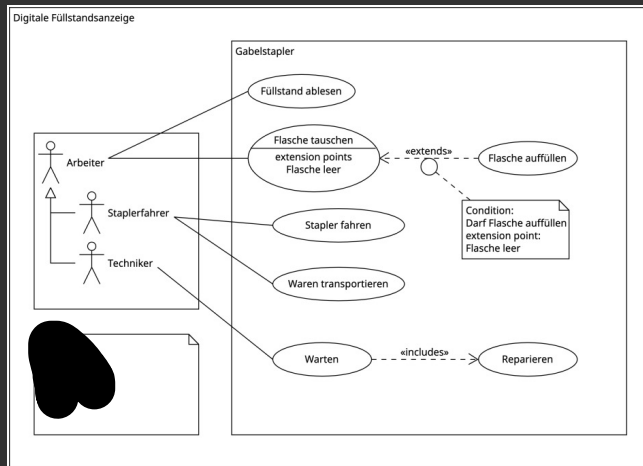


Modellierung

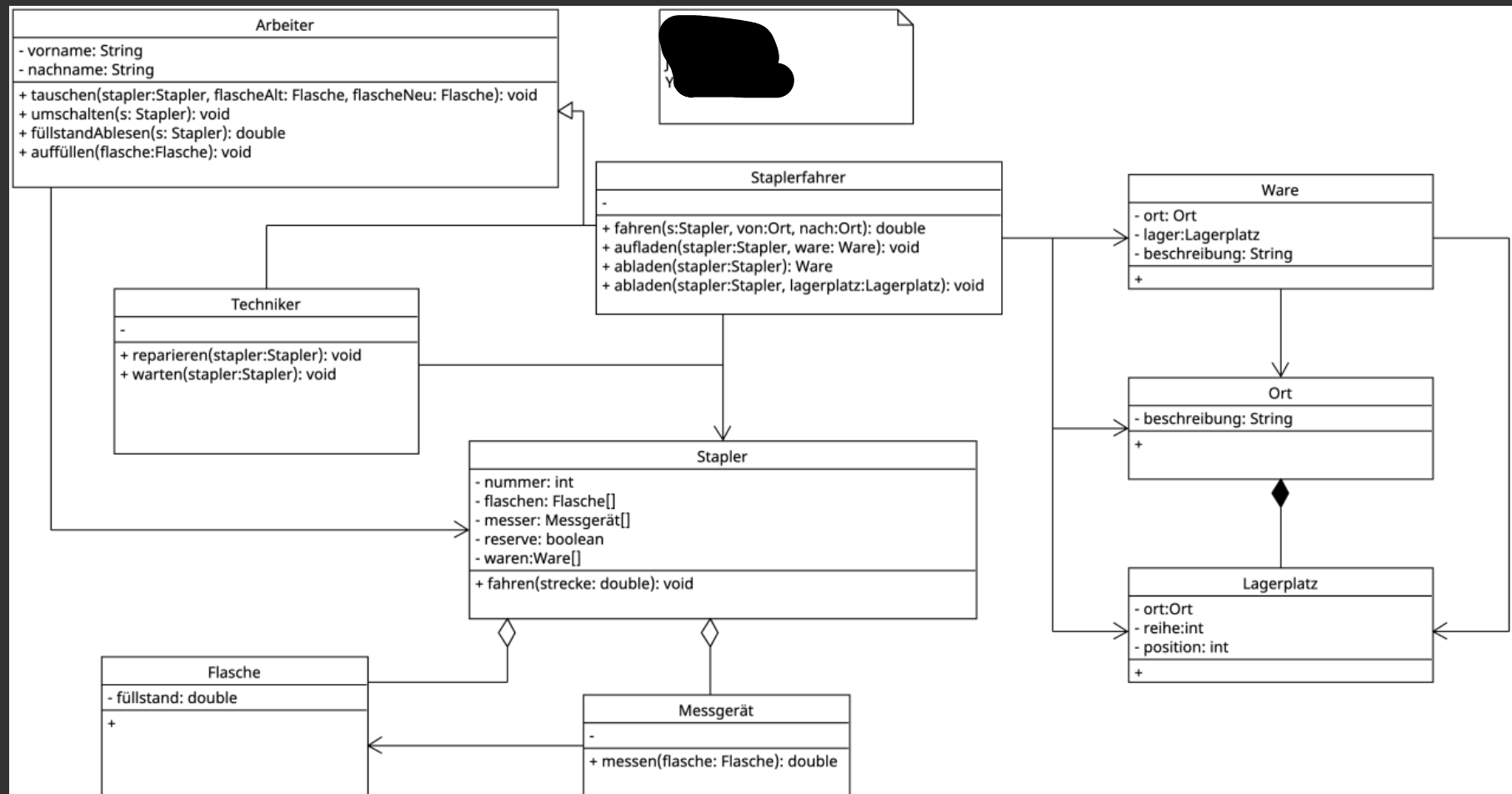
Digitale Füllstandsanzeige



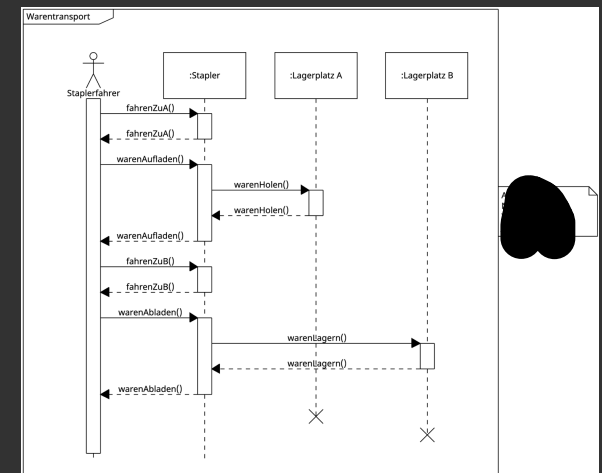
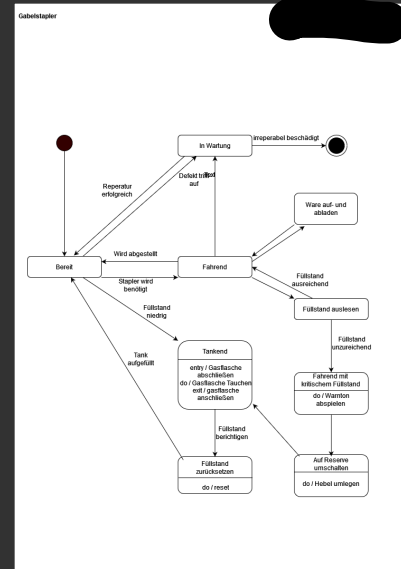
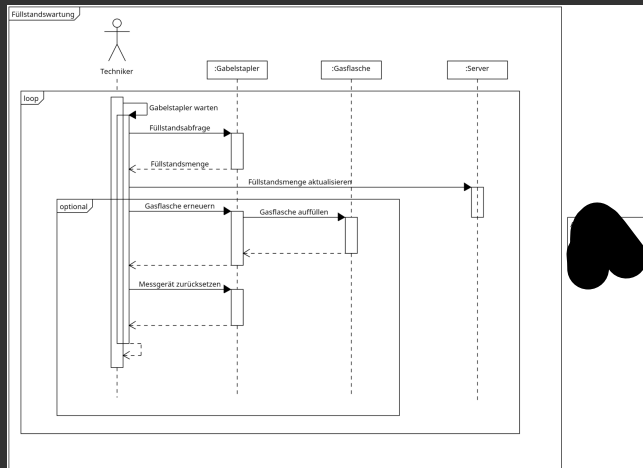
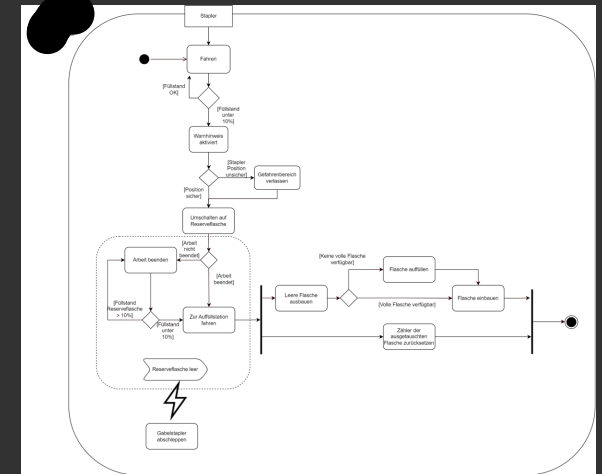
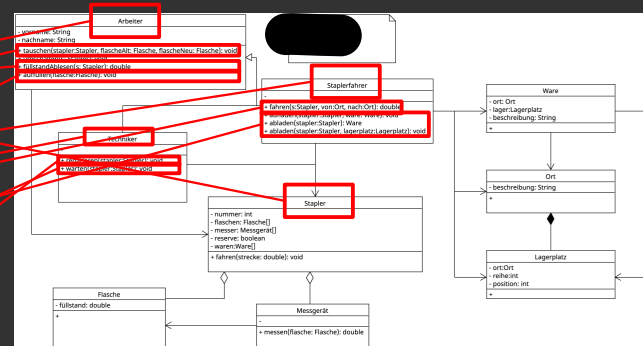
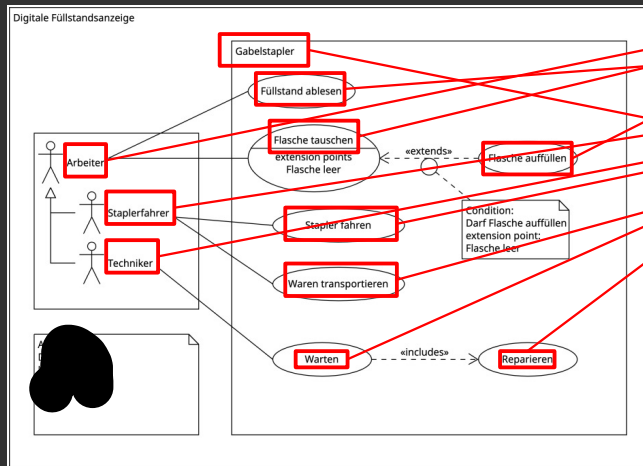
Modellierung



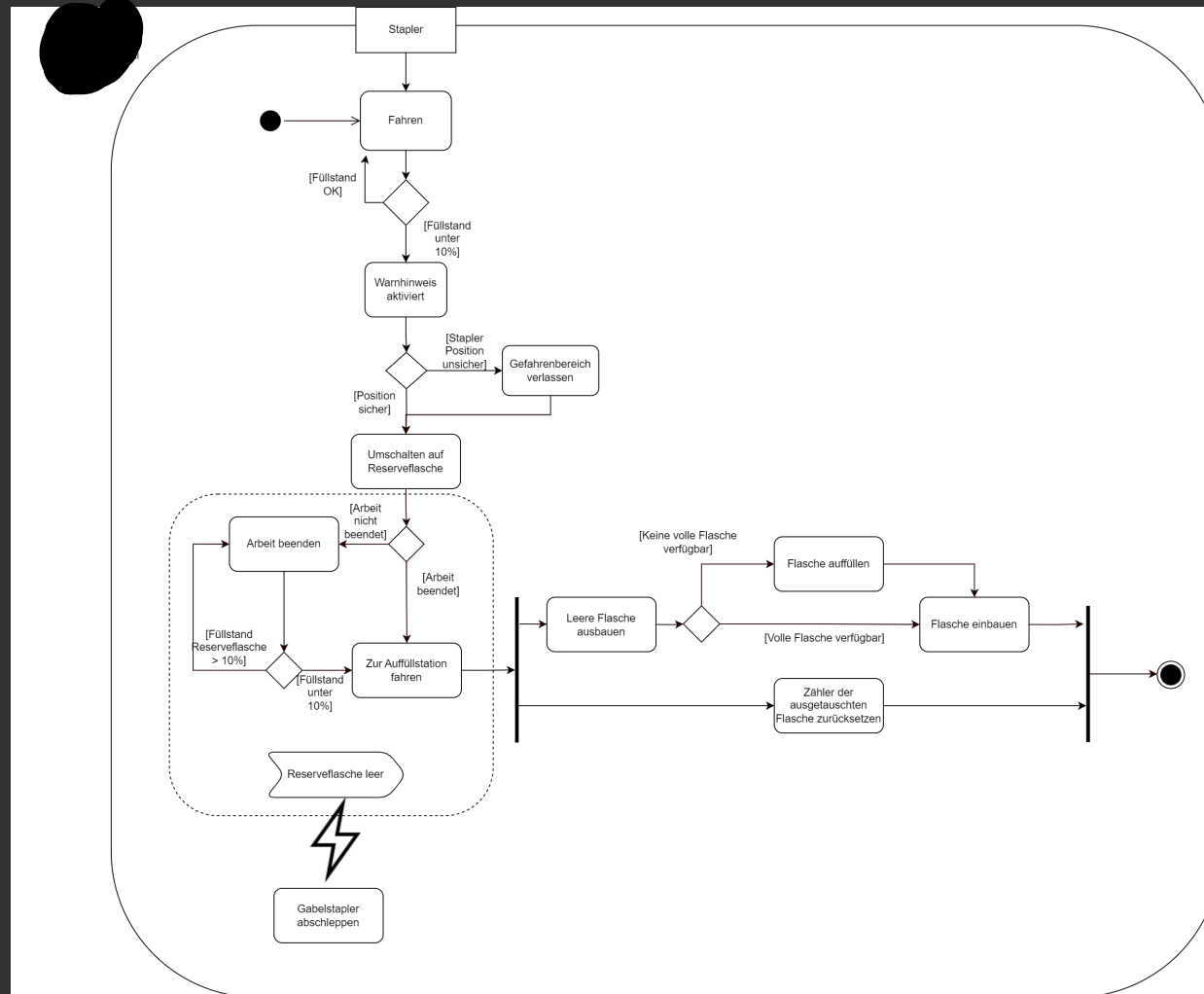
Modellierung



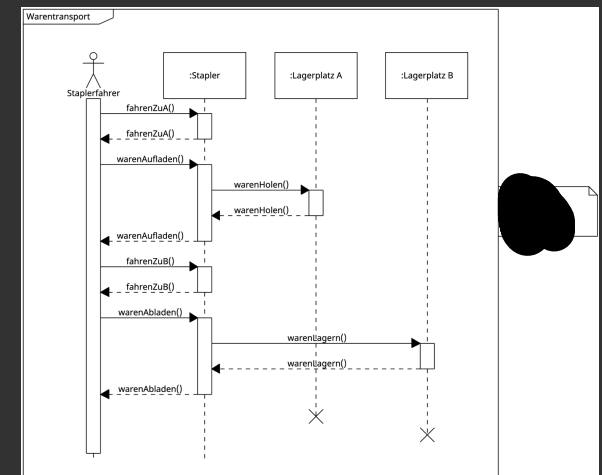
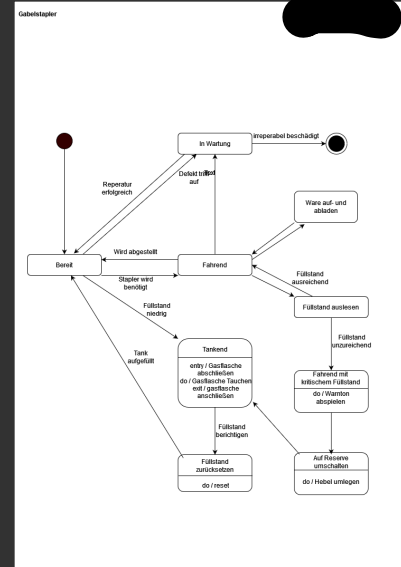
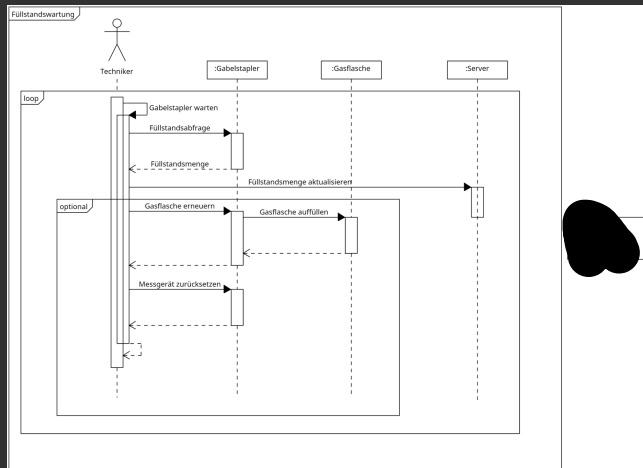
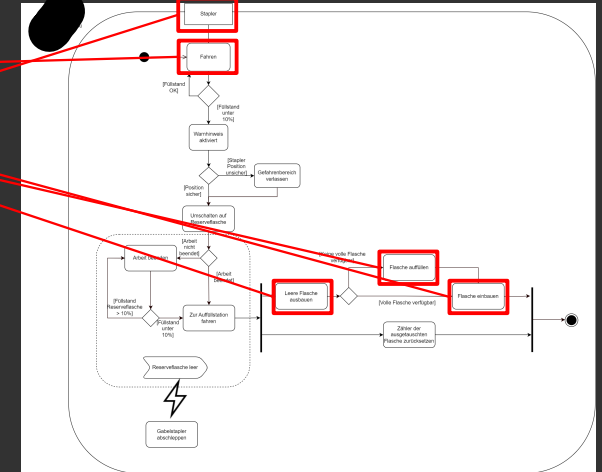
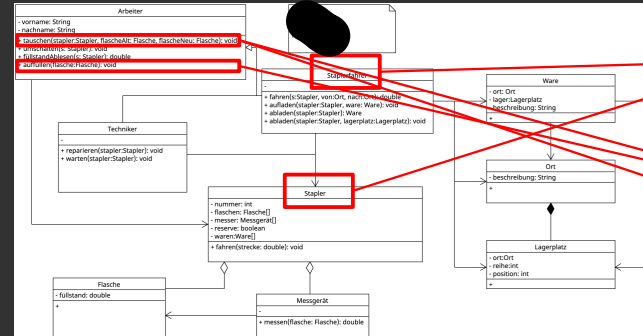
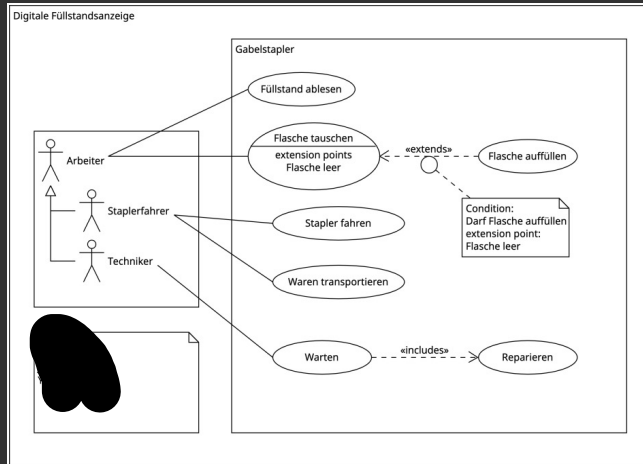
Modellierung



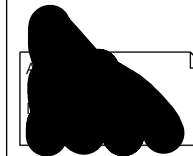
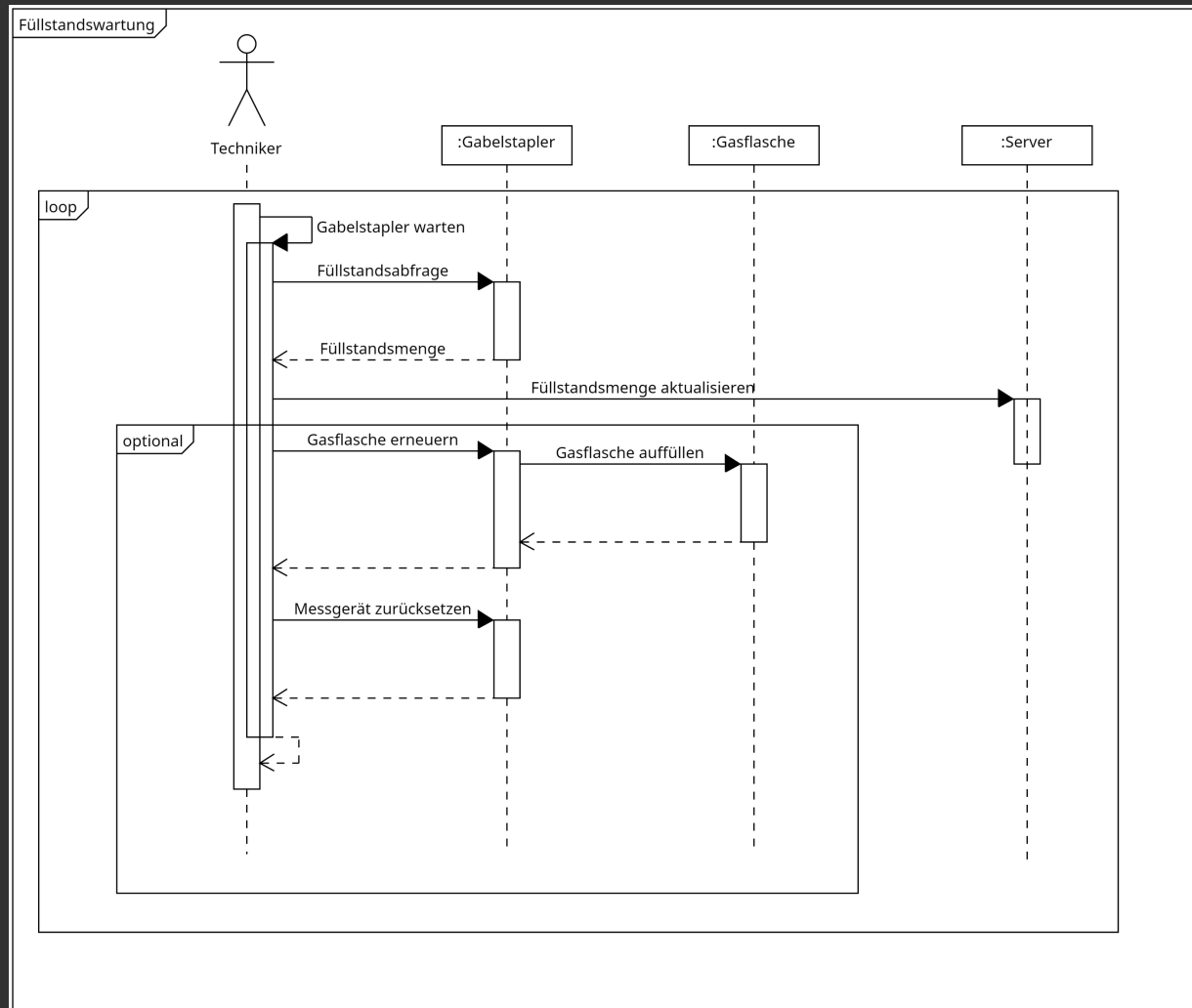
Modellierung



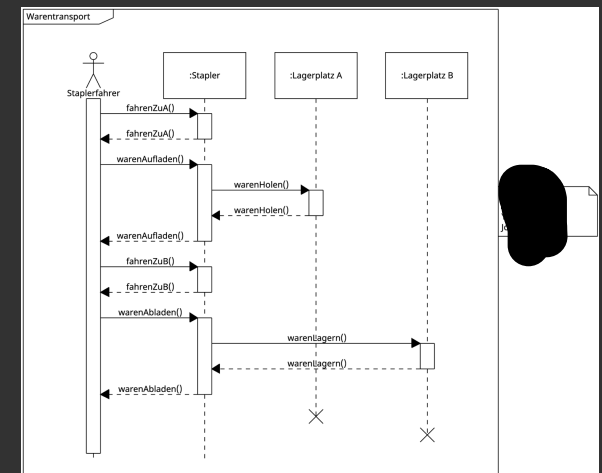
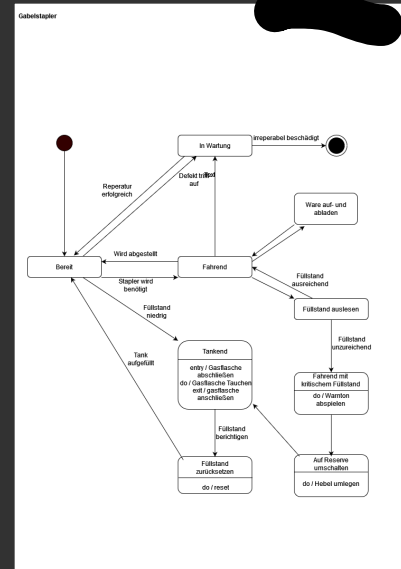
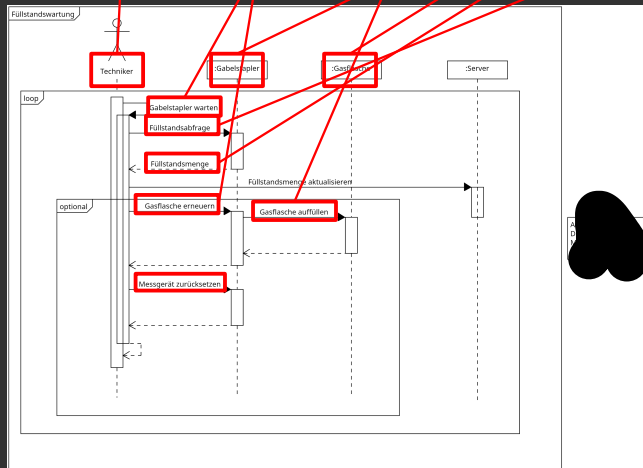
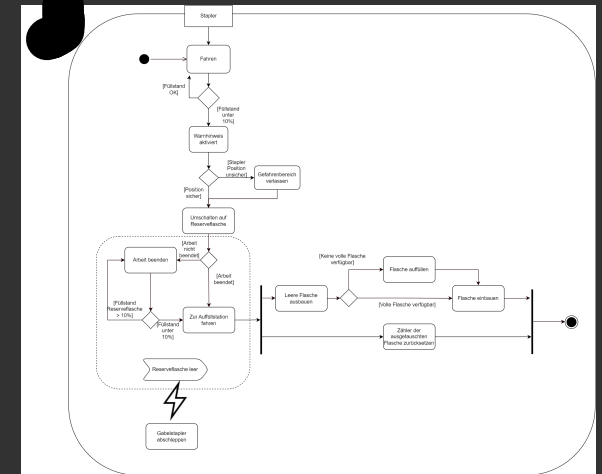
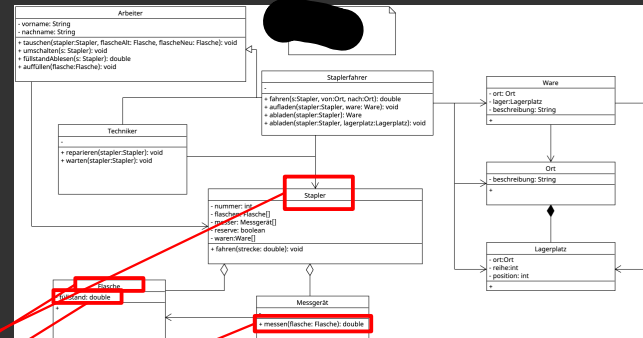
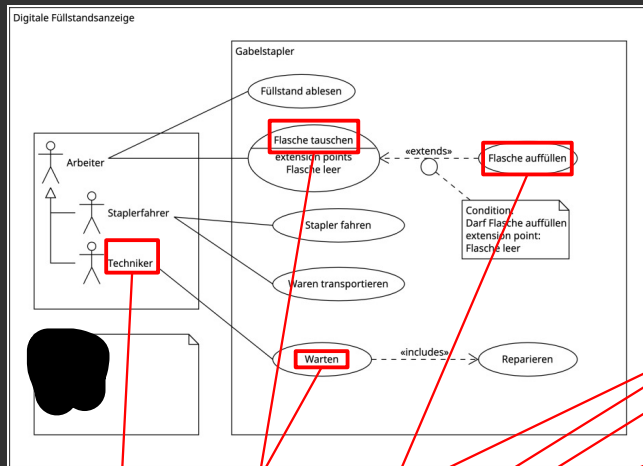
Modellierung



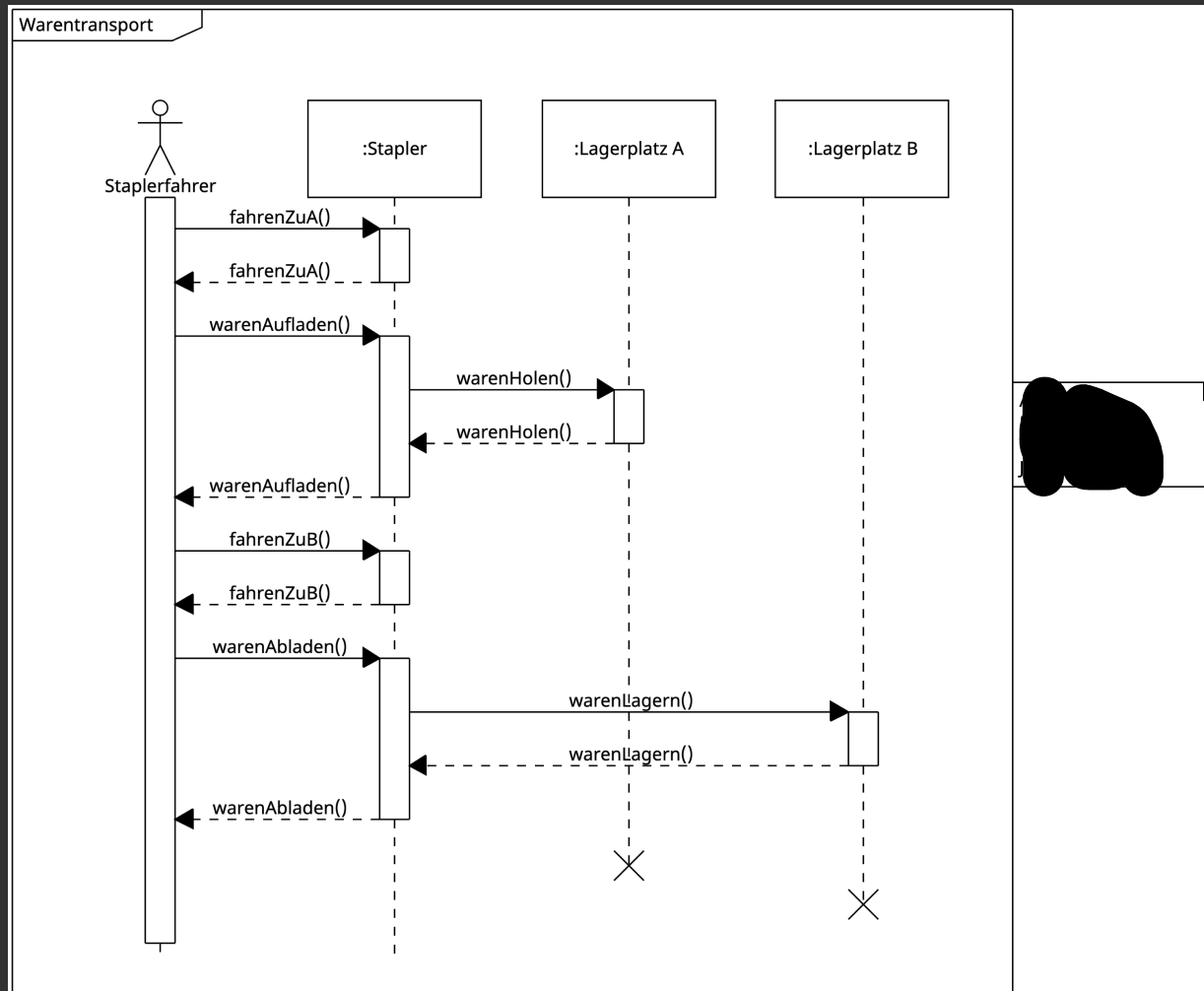
Modellierung



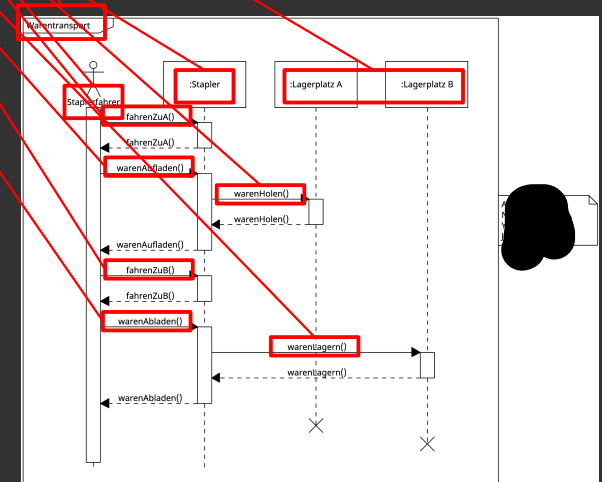
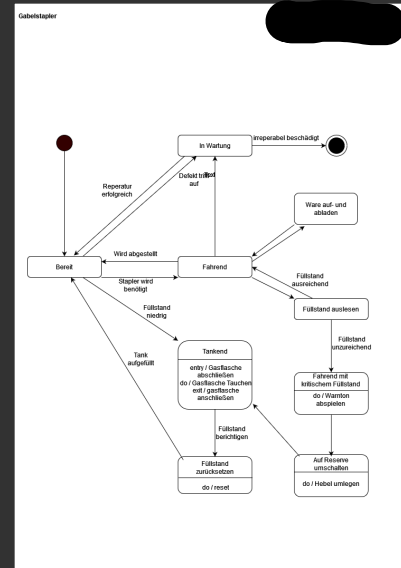
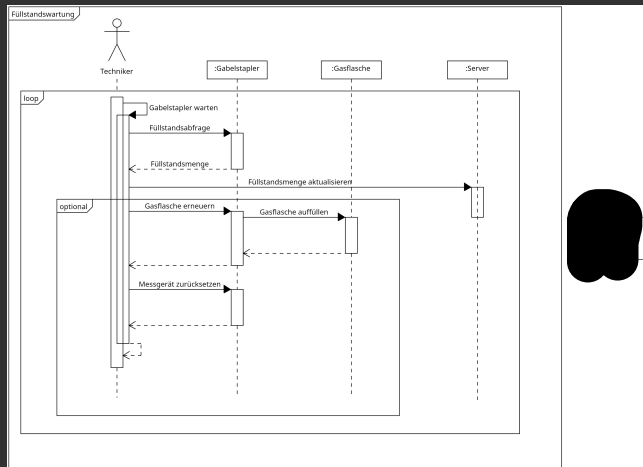
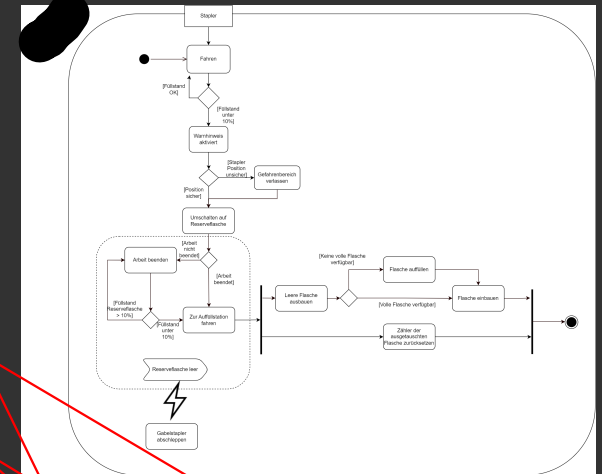
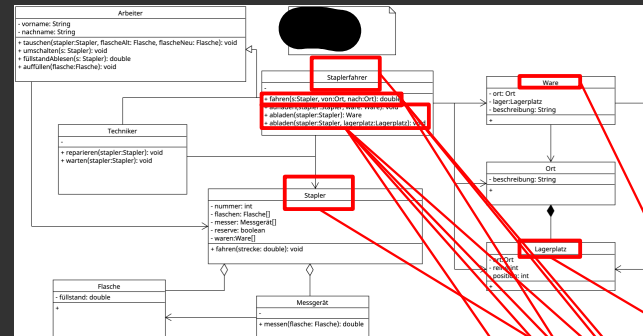
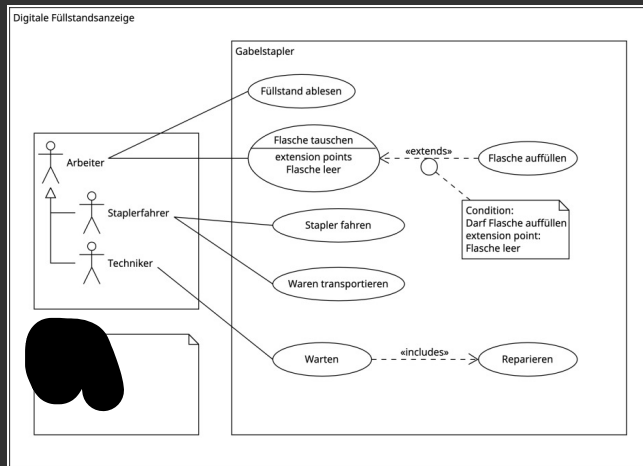
Modellierung



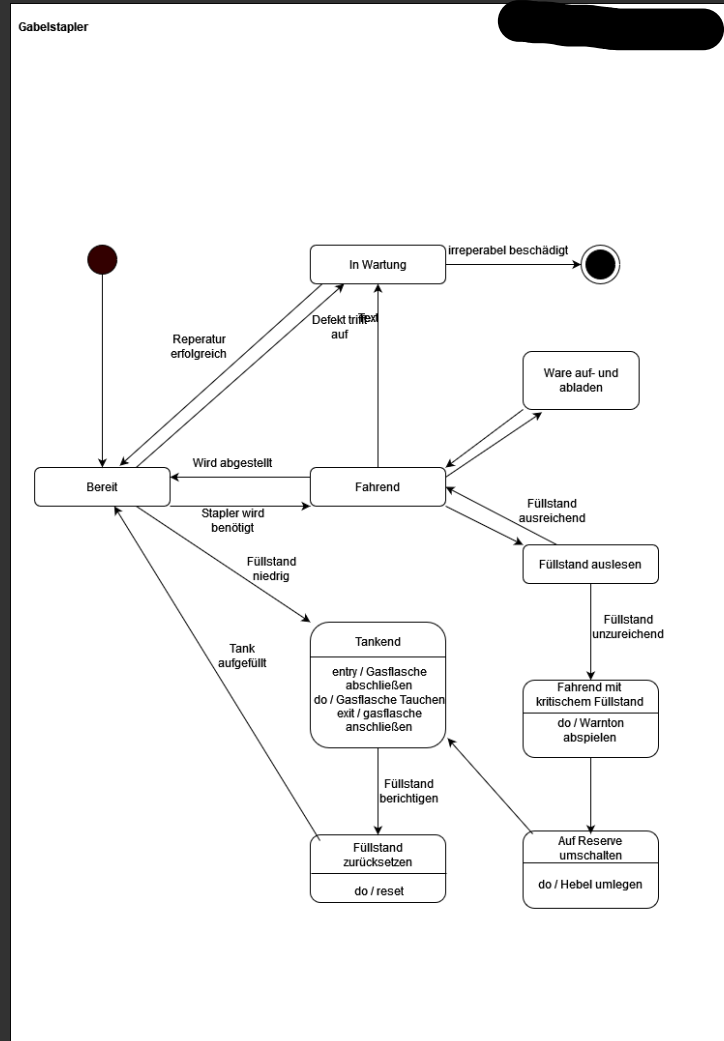
Modellierung



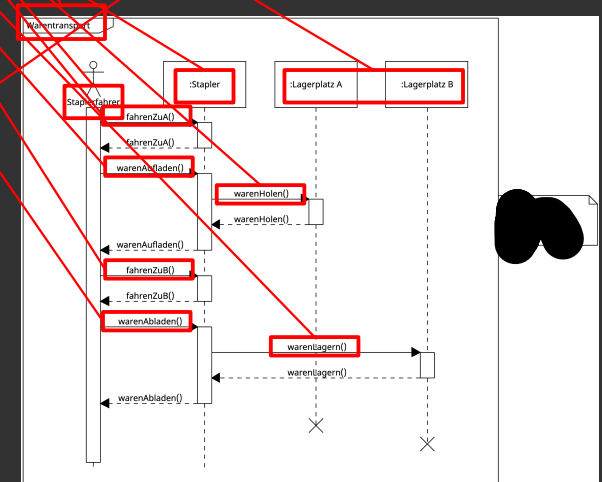
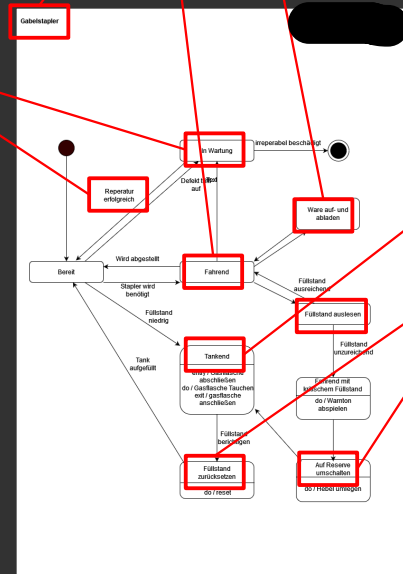
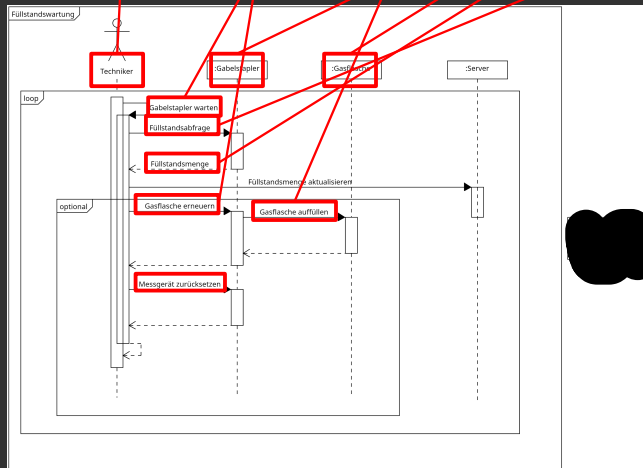
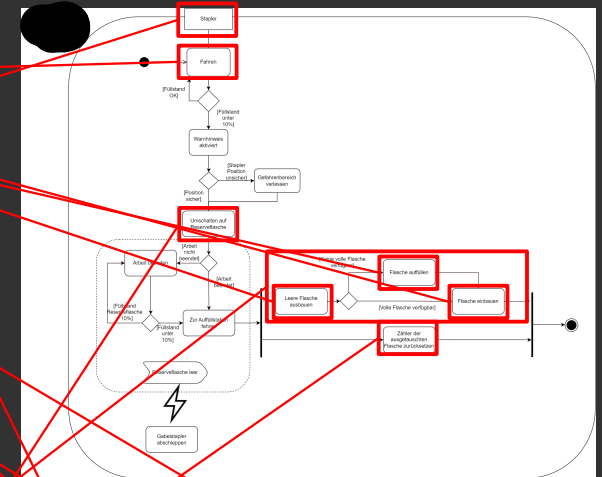
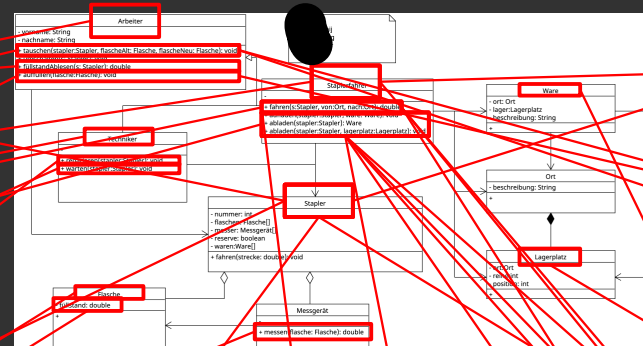
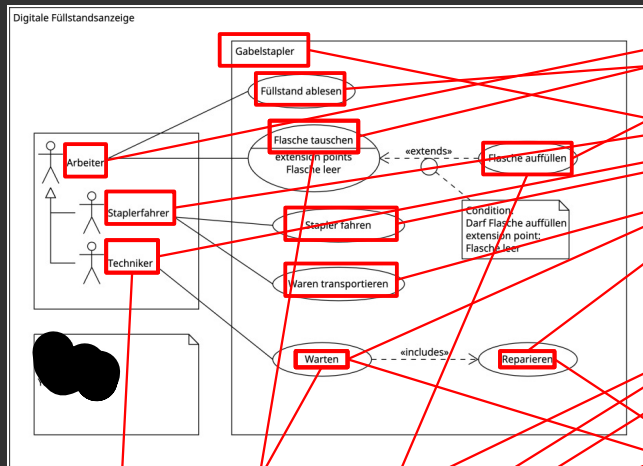
Modellierung



Modellierung



Modellierung



Fragen???

- Fragen zu den Themen:
 - Use-Case-Diagramme
 - Statisches Modell (UML-Klassendiagramm)
- ➔ In 14 Tagen: Thema/Video „UML-Aktivitätsdiagramme“